

CASE STUDY

Industrial Gas Manufacturer Avoids Compressor Shutdown with ESP

ESP eliminates routine shutdowns and bearing replacement and/or manual cleaning

[LEARN MORE](#)

Industrial Gas Manufacturer Avoids Compressor Shutdown with ESP

TOTAL REPORTED CUSTOMER SAVING
US +\$100,000



CLIENT: Industrial Gas
Manufacturer

COUNTRY: Belgium

APPLICATION: Atlas Copco
multistage compressor

OIL VOLUME: 1200 liters

SAVINGS: 17.000 € per year

SOLUTION: Fluitec ESP

PROBLEM

One of Belgium's market leaders in gas-related technology and services for industry and healthcare was experiencing varnish buildup on bearings which resulted in shutdowns every 3-4 months and with manual bearing cleaning and/or replacement, as well increased filter exchange rates.

SOLUTION

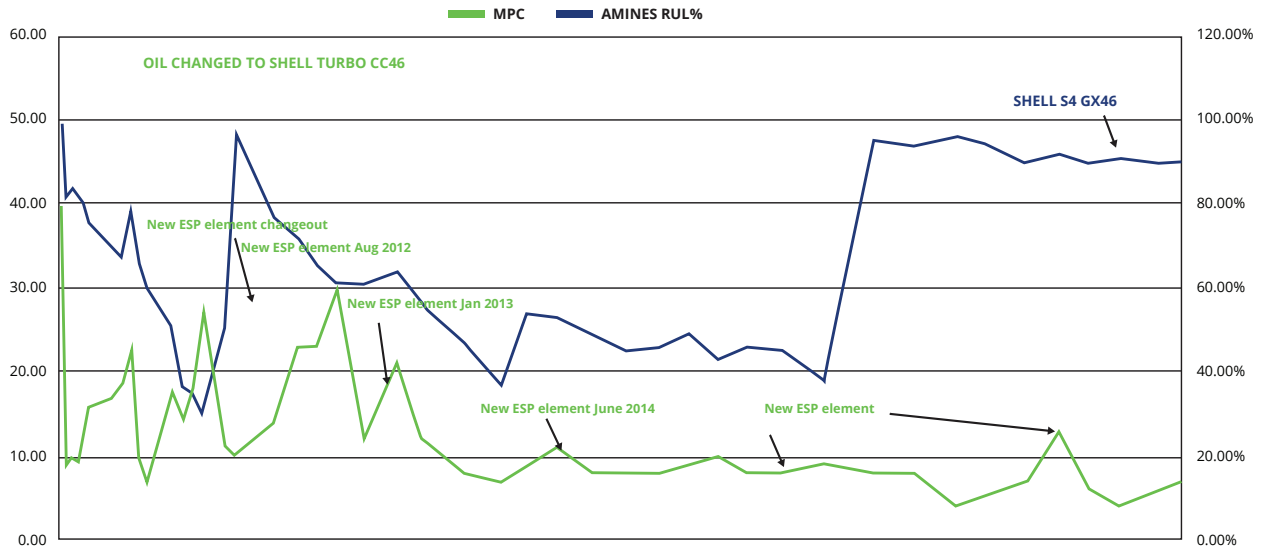
Fluitec's ESP™, (Electrophysical Separation Process) is a lubricant varnish and deposit mitigation technology using chemical filtration. The ESP system has been installed for the past nine years and has maintained high levels of success.

RESULTS

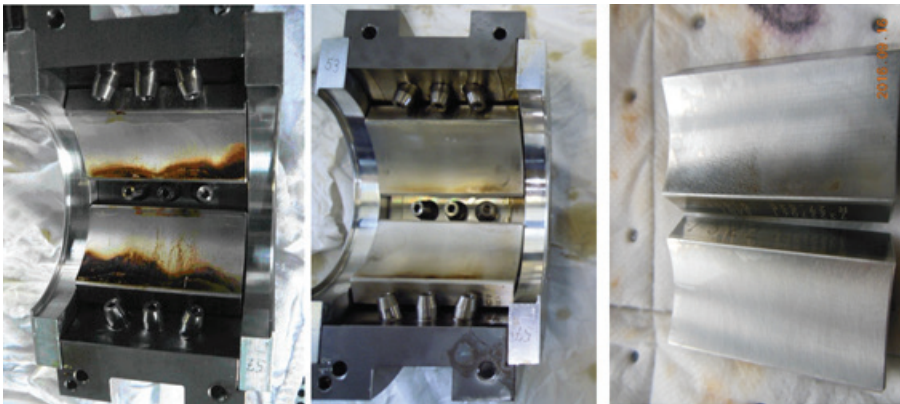
- No varnish-related maintenance intervention since installation
- No bearing replacement
- Longer filter life
- Lubricant life extension



OIL CONDITION TREND 2011 - 2020



VISUAL BEARING CONTROL



2010

2011

2016



INDUSTRIAL GAS MANUFACTURER AVOIDS COMPRESSOR SHUTDOWN WITH ESP